

ANIKASHARMA .WORLD

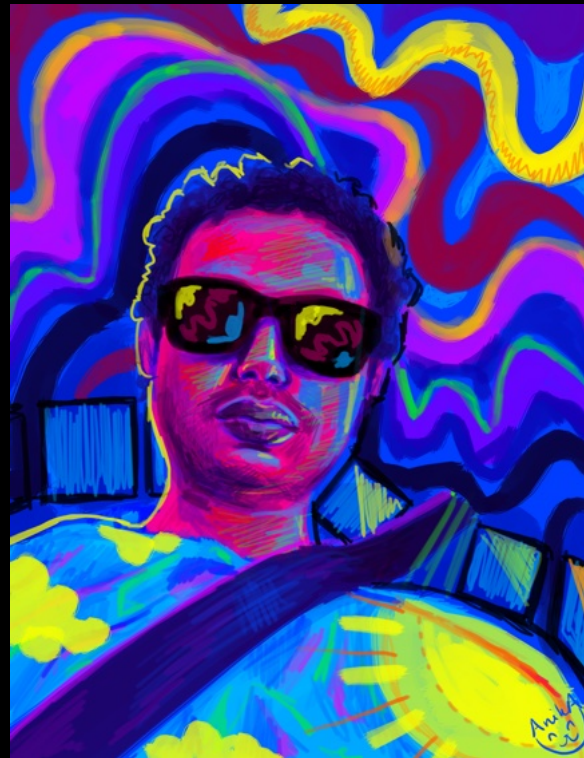
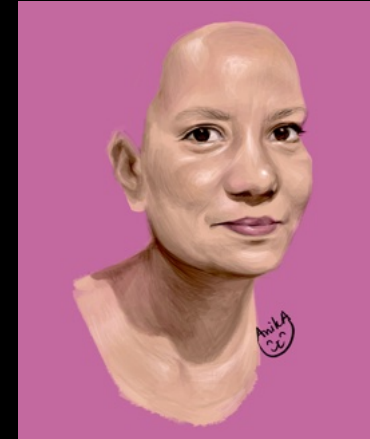
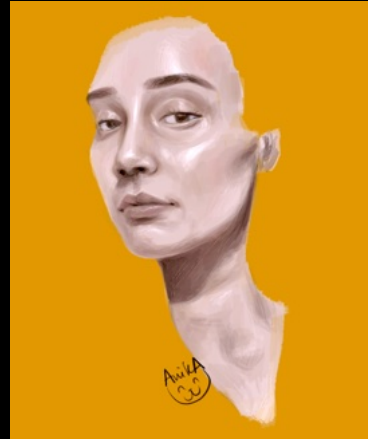
*Gallery
June 2024*

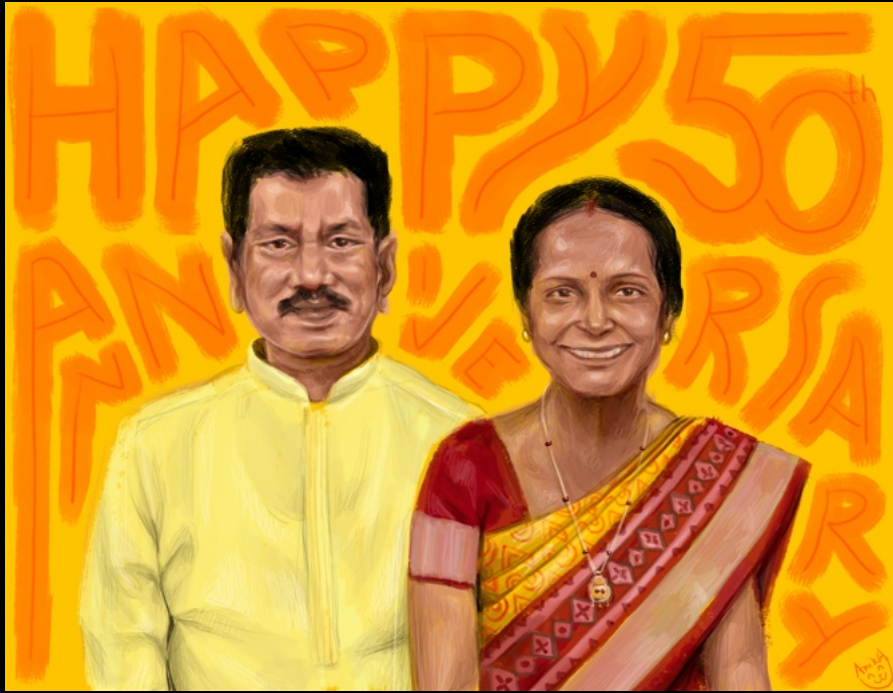


Contents

Commissioned Artwork	3
Print Artwork	6
Branding & Editorial Design	18
Tattoo Design	21
Fashion & Jewellery	23

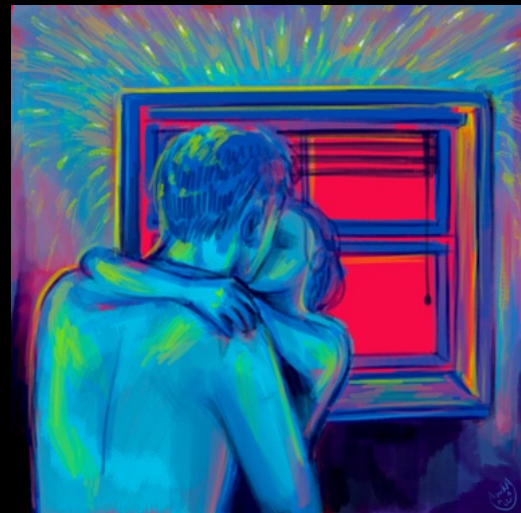
Commissioned Artwork

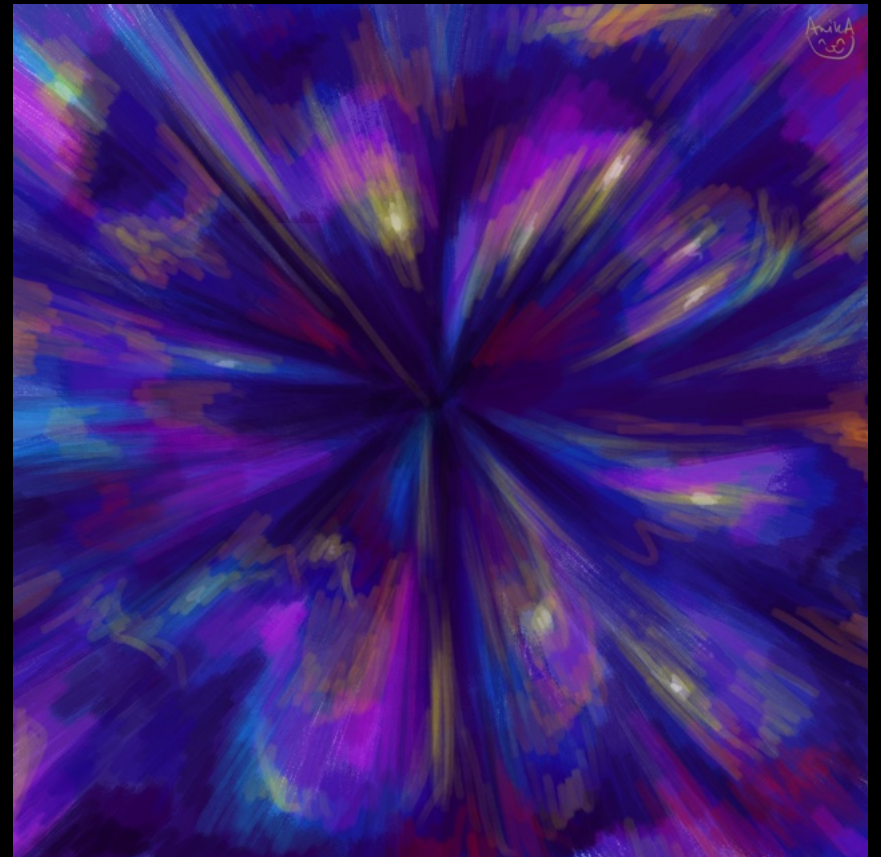
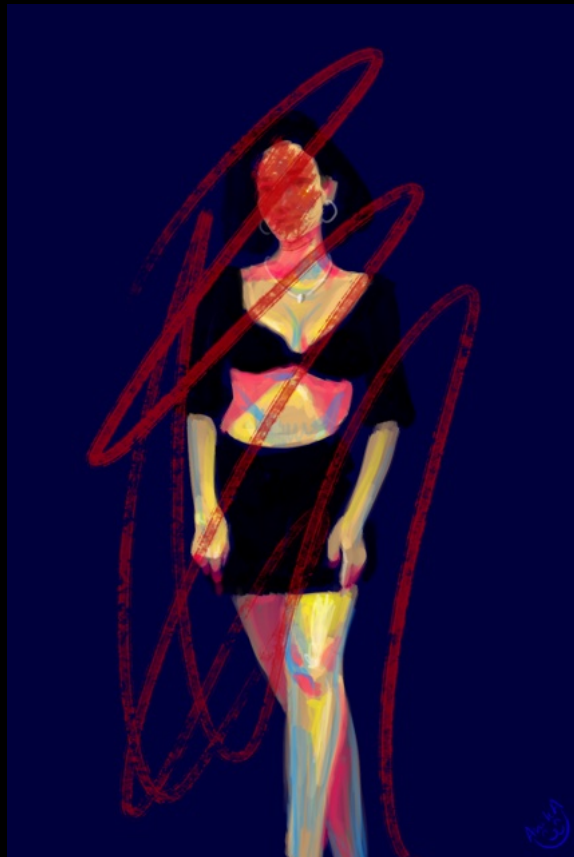


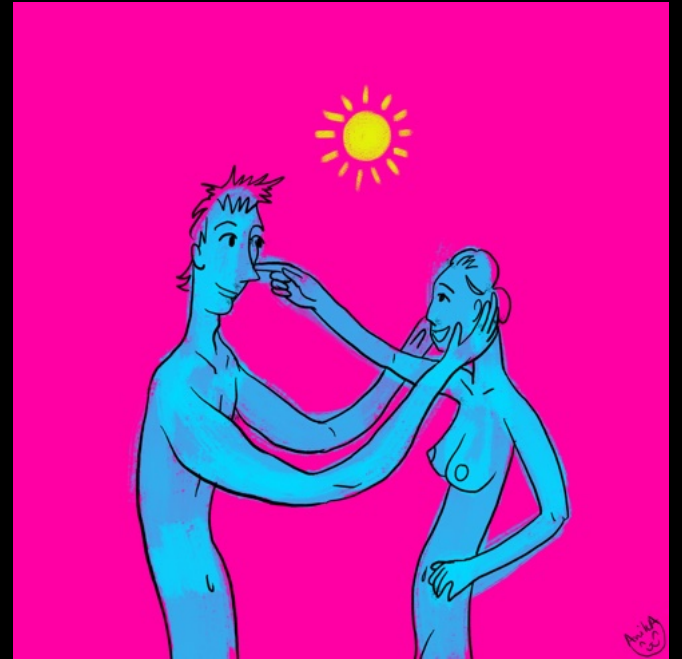
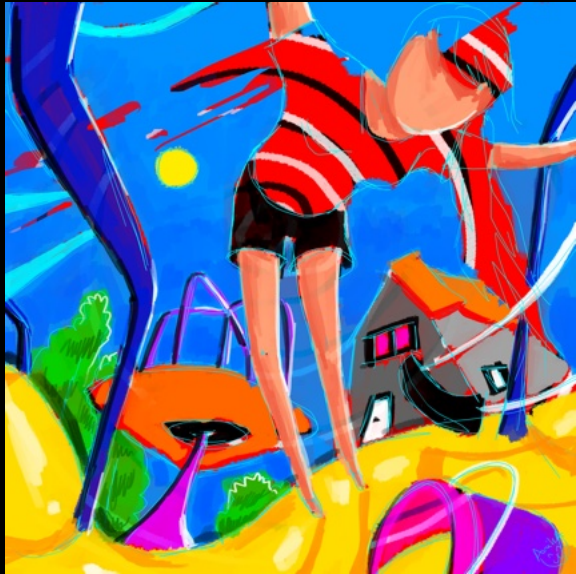
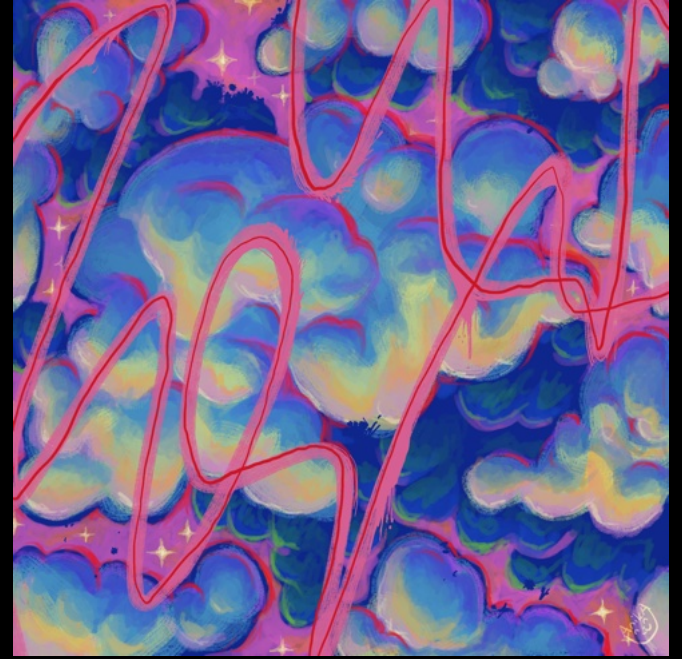
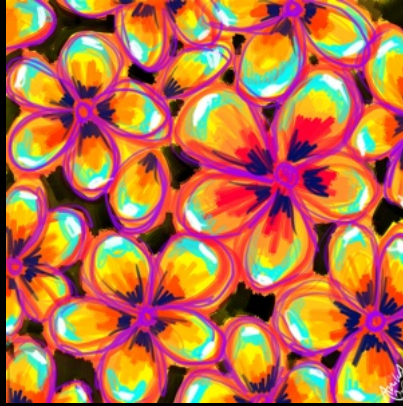
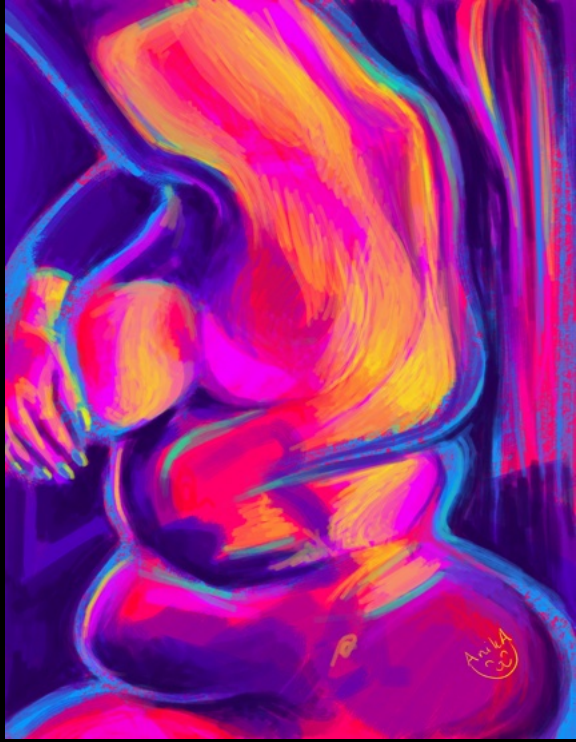


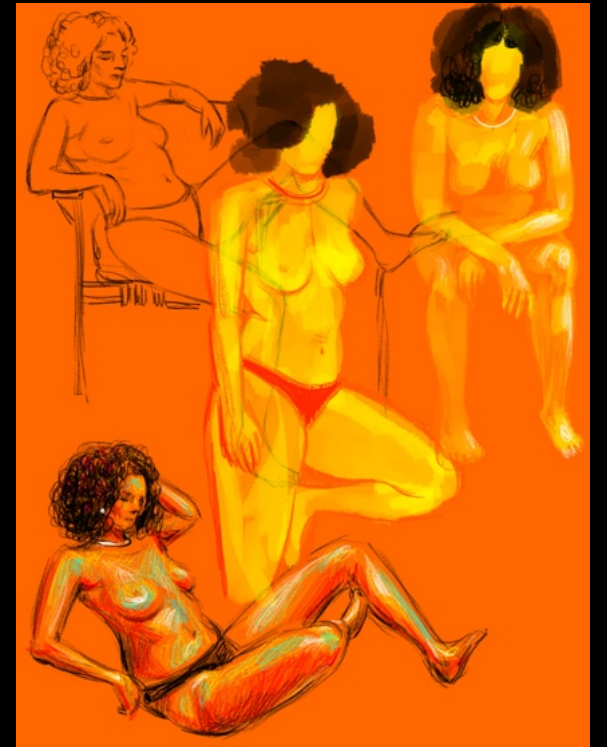
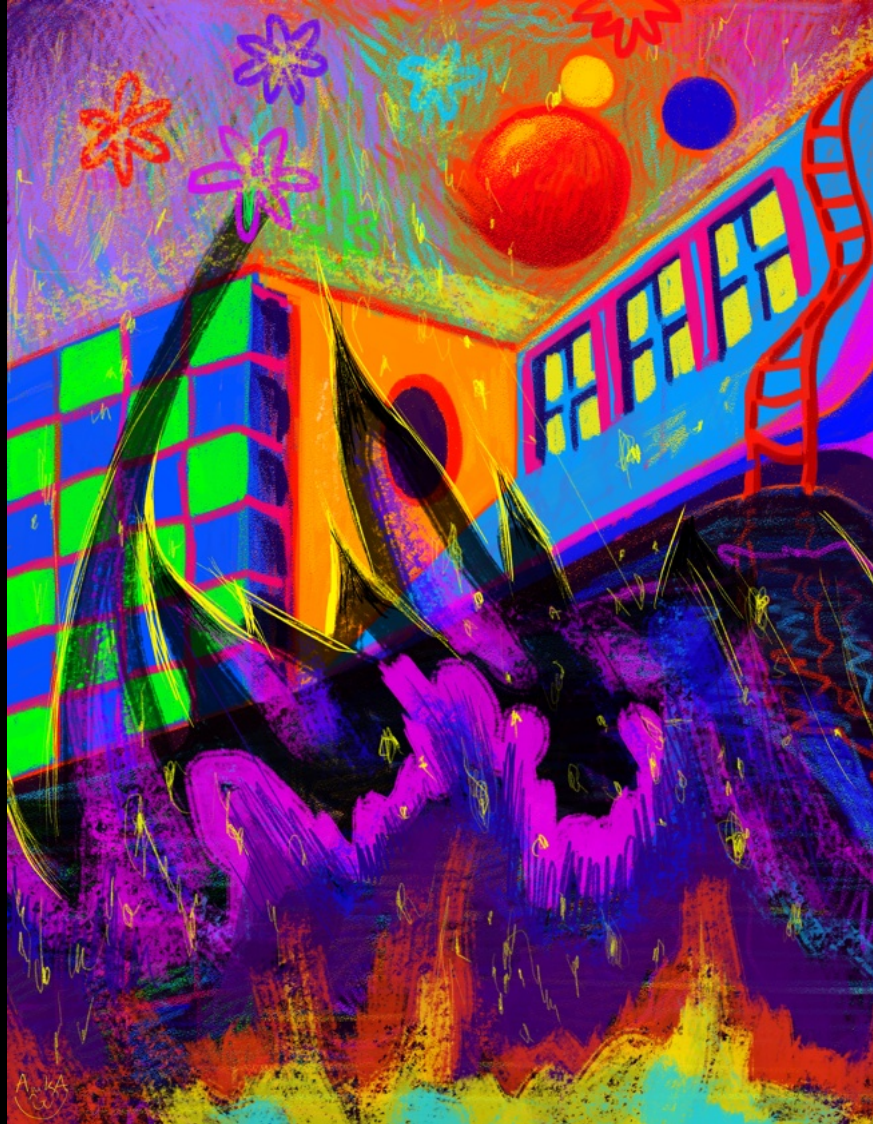


Print Artwork



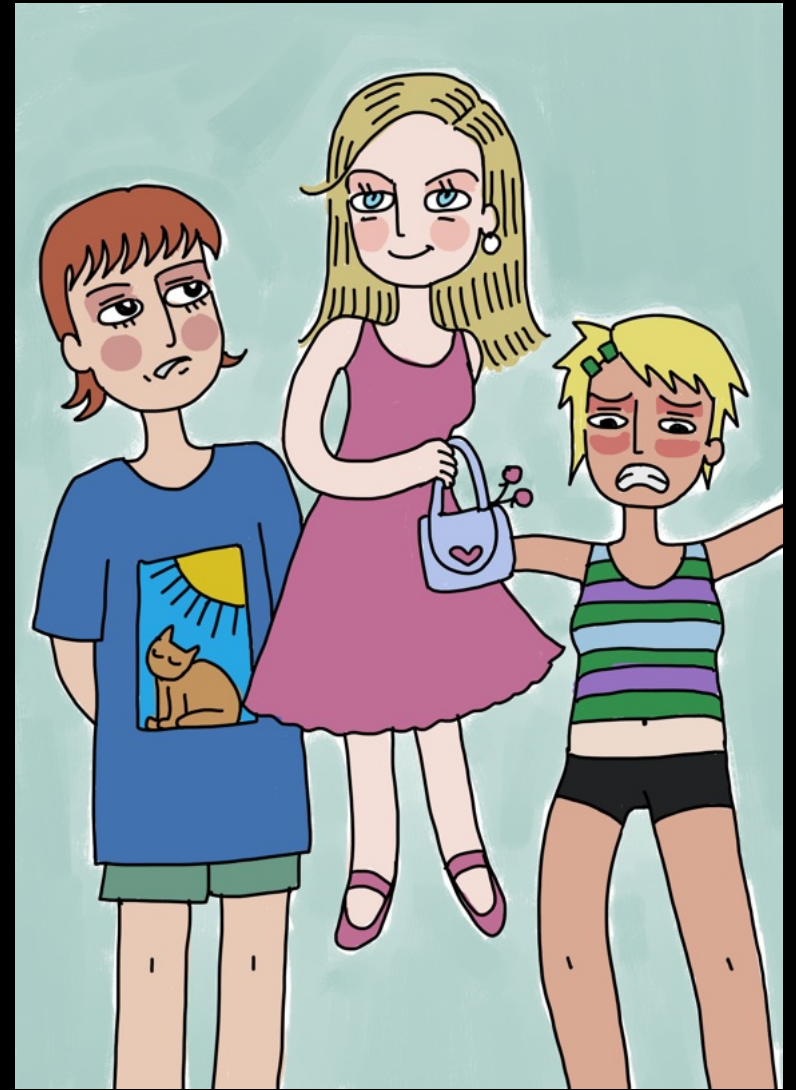
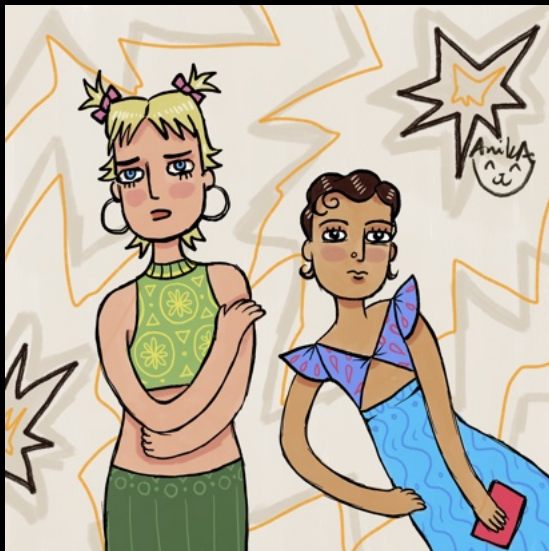
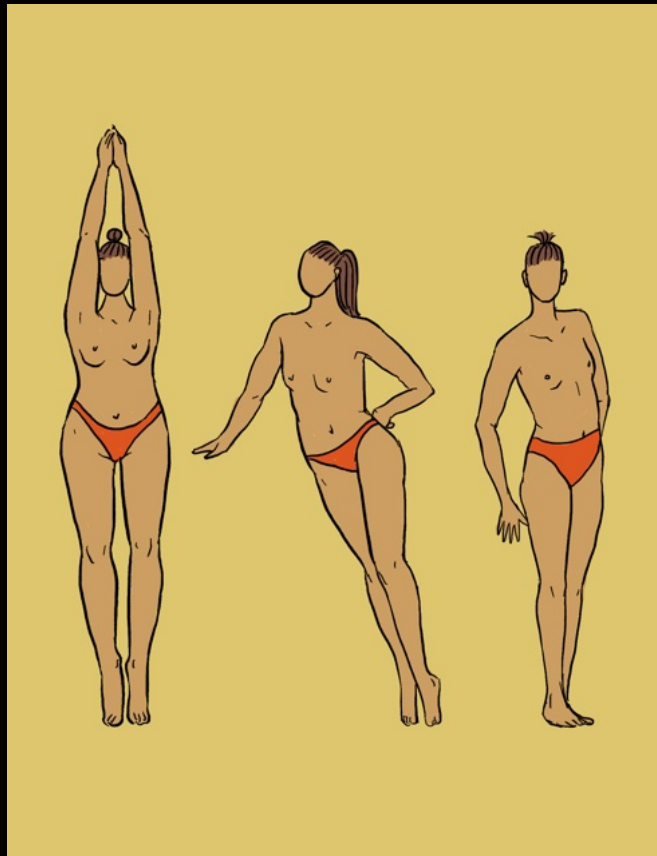




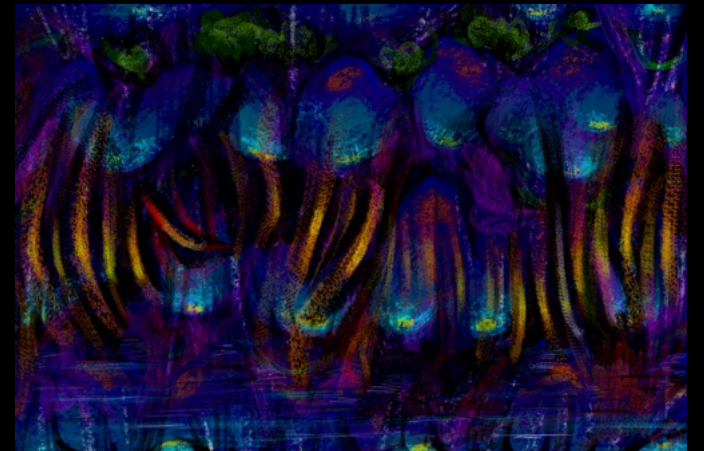
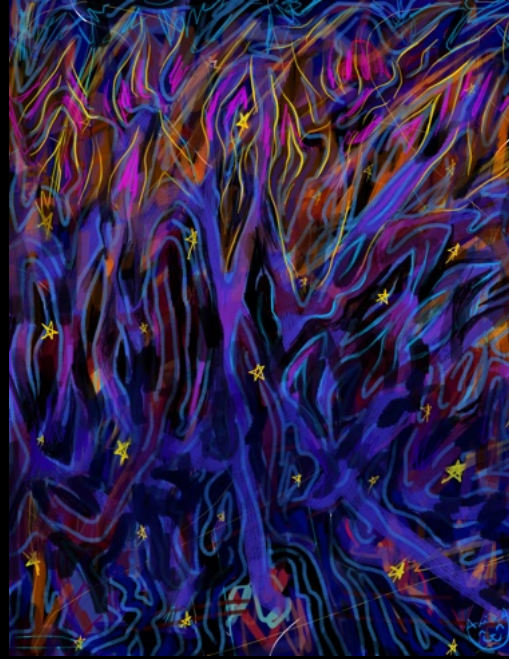


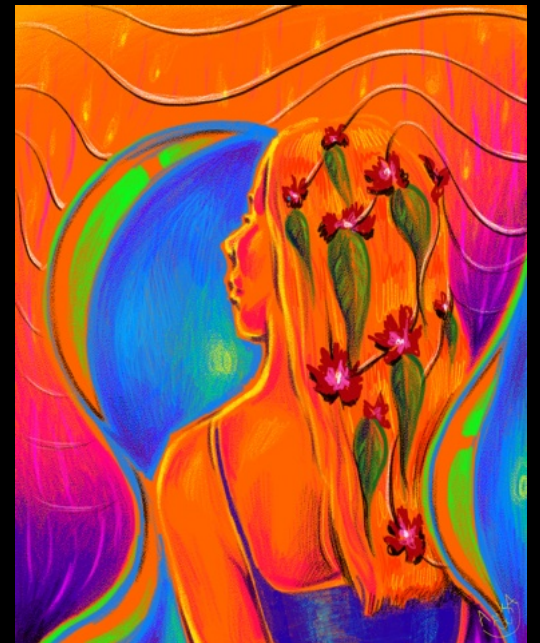
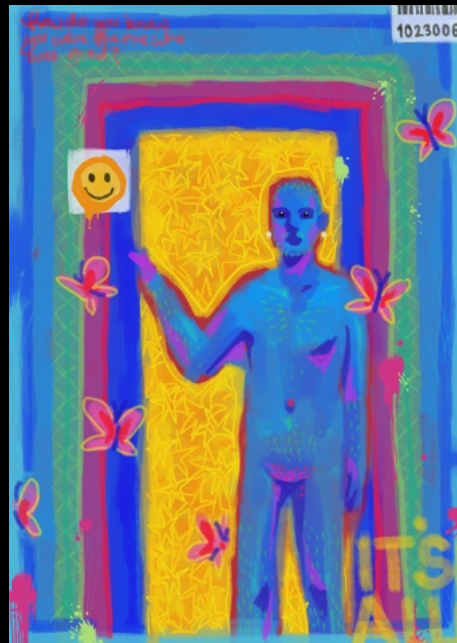
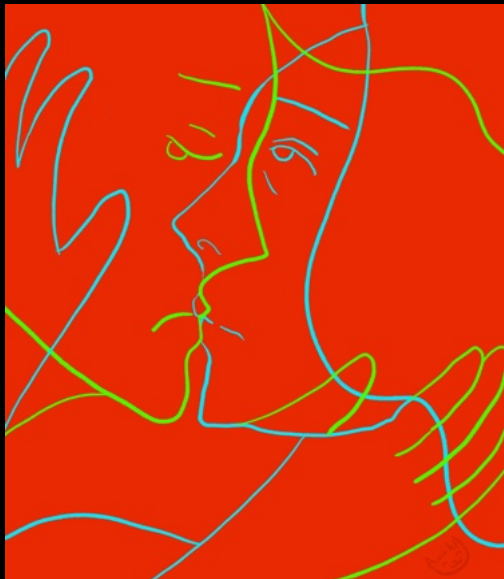
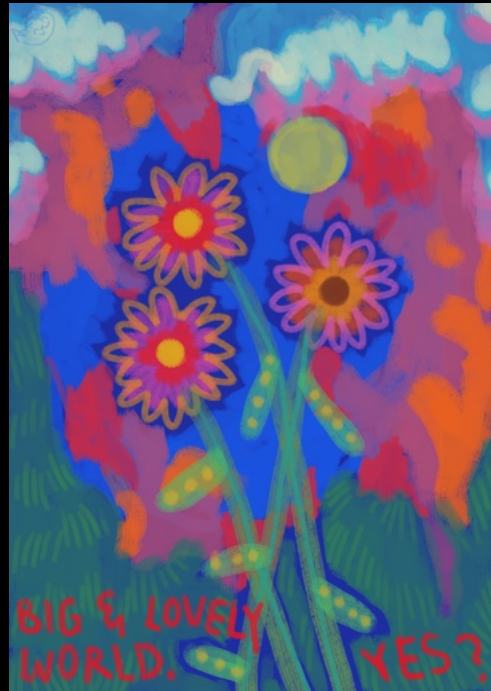
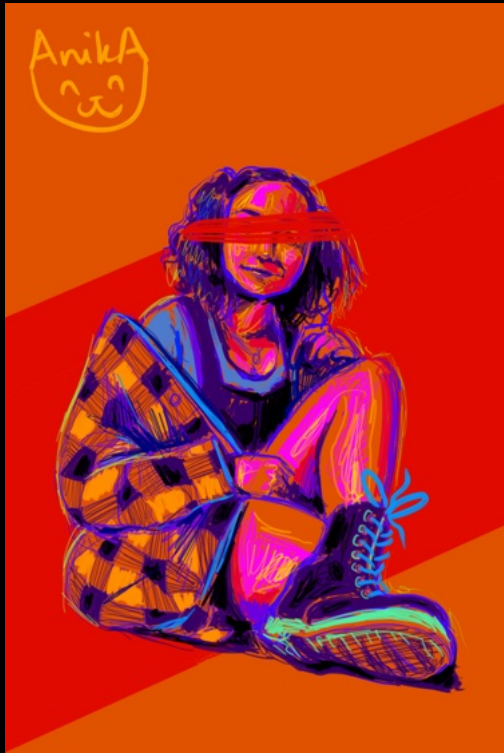


FUCKING HELLI!
**STOP
STICKING
GUMMER
UNDER
THE
TABLES!**
THERE ARE LITERALLY
BINS EVERYWHERE BRU





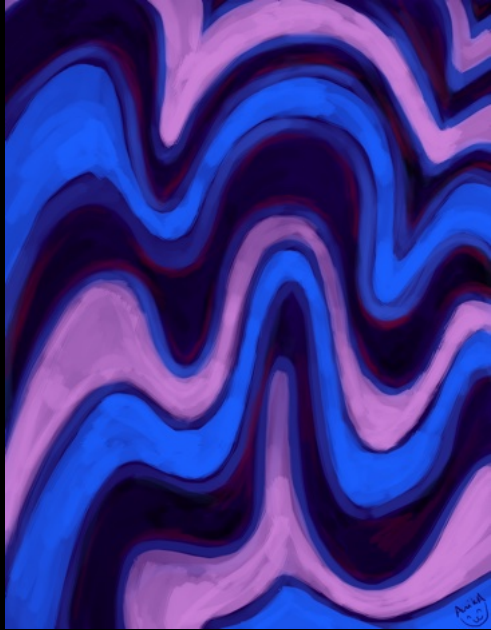


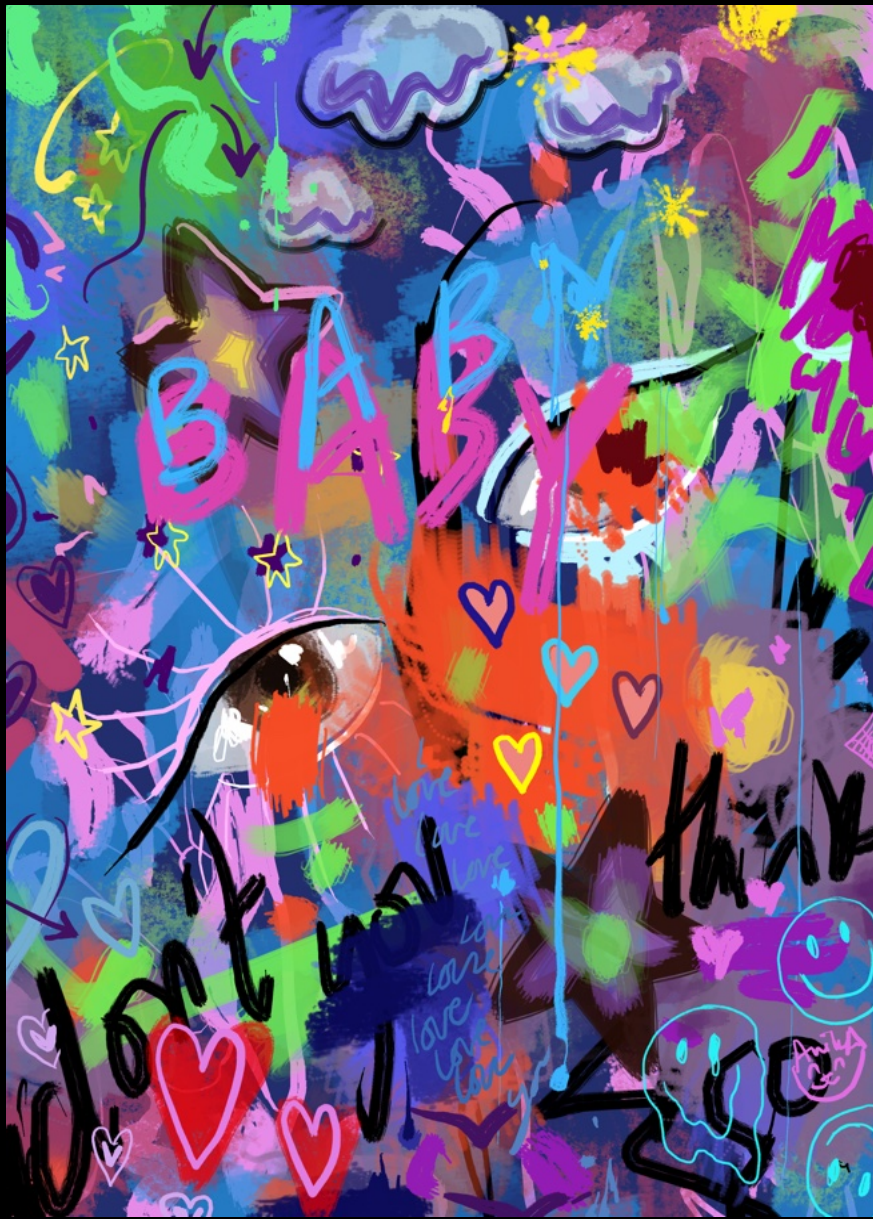
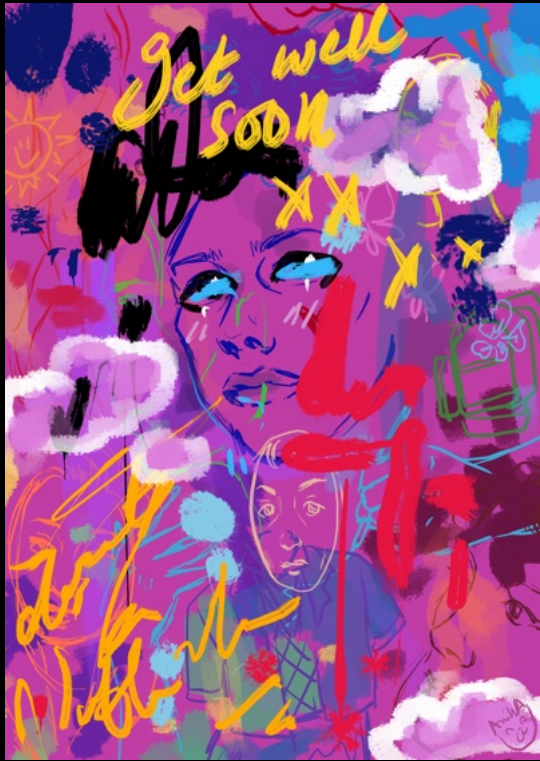




YOU ARE
ALREADY
THE MOST
BEAUTIFUL
PERSON IN
THE WORLD







Branding & Editorial Design



THE WAY I SEE IT

by Rachel Freeman

explore how people with dementia see the world.

Croft Castle
Jun-Oct 2022

Scan for a taster!

<http://www.everybodydance.org.uk/the-way-i-see-it>

in partnership with

LEOMINSTER MEETING CENTRE | supersum+ | University of Worcester | the Tudor trust | Herefordshire COMMUNITY FOUNDATION | National Trust

THE WAY I SEE IT

by Rachel Freeman



Explore how people with dementia see the world.

Croft Castle
25 Jun onwards

Scan for a taster!

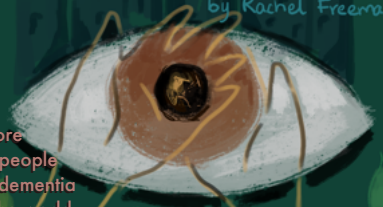


in partnership with <http://www.everybodydance.org.uk/the-way-i-see-it>

LEOMINSTER MEETING CENTRE | supersum+ | University of Worcester | Tudortrust | Herefordshire Community Foundation | National Trust

THE WAY I SEE IT

by Rachel Freeman




Explore how people with dementia see the world

CROFT CASTLE
25 JUN

ONWARDS

Scan for a taster!



in partnership with <http://www.everybodydance.org.uk/the-way-i-see-it>

LEOMINSTER MEETING CENTRE | supersum+ | University of Worcester | Tudortrust | Herefordshire Community Foundation | National Trust

DRAWN TOGETHER

Gemma Moore



in collaboration with members of Leominster Meeting Centre for people affected by dementia.

ANTE ROOM GALLERY, GRANGE COURT, LEOMINSTER


EXHIBITION
8 December - 17 December 2022
Monday to Saturday
10am to 4pm

PRIVATE VIEW
7 December 2022
2pm to 4pm

LEOMINSTER MEETING CENTRE | supersum+ | University of Worcester | Tudortrust | Herefordshire Community Foundation

Elect TIBERIU

for Faculty of Arts Rep!



FOR THE BETTERMENT OF EDUCATION

- Forge strong partnerships between the faculties and the Centre for Innovation
- Empower collective thought for individual improvement
- Rediscover yourself in the pandemic
- Reach new heights in the way you perceive the world. The Think Tank
- Promote the importance of leadership

VOTE

in the Bristol SU Elections
9-11th MAR

bristolsu.org.uk/elections

DRAWN TOGETHER

GEMMA MOORE

in collaboration with members of Leominster Meeting Centre for people affected by dementia.

Exhibition

8 - 17 December 2022
Monday - Saturday
10am - 4pm



Private view

7 December 2022
2pm - 4pm

ANTE ROOM GALLERY, GRANGE COURT, LEOMINSTER



LEOMINSTER MEETING CENTRE | supersum+ | University of Worcester | the Tudortrust | Herefordshire Community Foundation



VOTE NATALIE

for society secretary

Hi! I'm Natalie and I'm a 2nd Year Economics and Politics student :))

MAIN GOAL

Working hard and closely with the society committee to support all the exciting events and everything PolSoc related coming next year!

I RECEIVE:	YOU RECEIVE:
An opportunity to engage in that sweet administration work which I actually do enjoy!	An amazing and dedicated society secretary who will do a better than great job ensuring the society is more active than ever.

Experience: PASS Leader

- Organising study sessions for Econ & Politics students
- Email communication with and reaching out to students, lecturers and faculty staff
- Actively looking for ways to improve the sessions

Link in my bio to vote @natalievitaaa

See y'all next year :))!

the freshest thing in fashion!

BARBIE'S BEACH WEAR

DoWise Designs

WHAT COULD BE BETTER THAN PLASTIC PLASTIC PLASTIC PLASTIC PLASTIC PLASTIC PLASTIC

SHOP NOW!

vol. 3

BARBIE'S BEACH WEAR

YOU KNOW WHAT IT FEELS LIKE TO BE THIS SHINY IN PLASTIC PLASTIC PLASTIC PLASTIC

SHOP NOW!

rare pieces that will last forever!

vol. 2

BARBIE'S BEACH WEAR

Female Anonim PHOTOPLAY

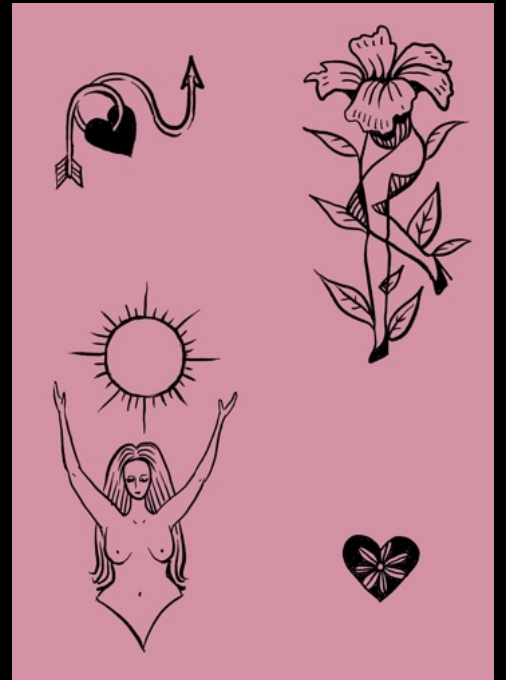
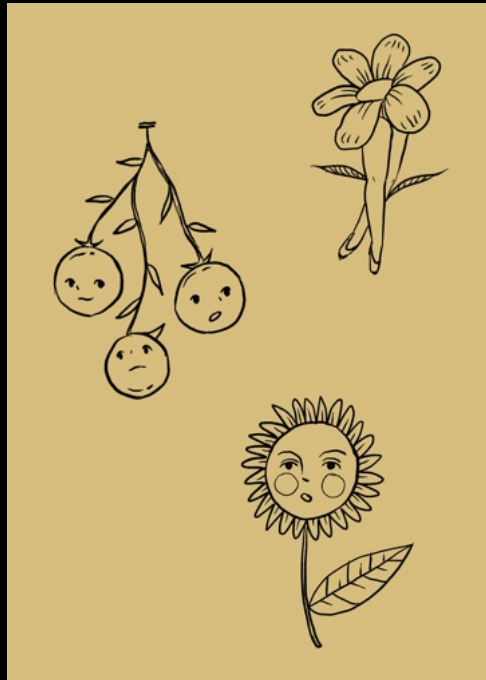
WHAT AM I WEARING?? OH PLASTIC PLASTIC PLASTIC PLASTIC PLASTIC PLASTIC PLASTIC SALE!

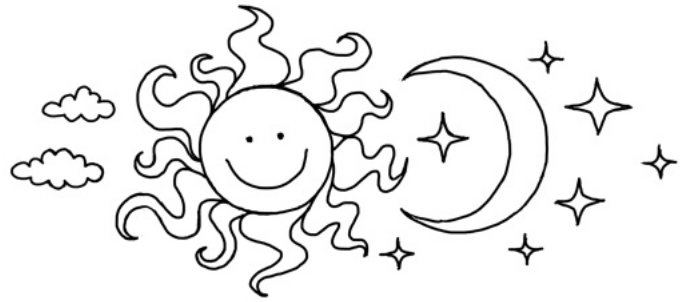
SHOP NOW!

a modern twist on the classics!

vol. 1

Tattoo Design





Fashion & Jewellery

♥ When it was
otherwise quiet all the
way around * * * * *
* * * * * you who were
given a life, what did
you make of it ?



Lines from a poem ('What It Sounds Like' by Forrest Gander) embroidered across the back of a denim jacket.



Crop top with front drawstring made using a pre-existing pattern and sewing machine.



Backless halter top made using silk with cotton lining; an original pattern made on a sewing machine.



Jeans embroidered with heart and star faux leather patches.



Tote bags printed with artwork.



Beaded jewellery custom made for clients.



Heart-shaped earrings made using a 3D printing pen.







anikasharma.world
anikasharma2632@gmail.com